



Strategic Priorities

Mahere Rautaki

Guiding Our Support In The Community

2014 - 2019



TE HUNGA HAUĀ MAURI MŌ NGĀ TĀNGATA KĀTOA



ccs
disability action
Including all people

About Us Mō Mātou

Our Organisation

CCS DISABILITY ACTION

was founded by Rotary in 1935 as the Crippled Children's Society to support children affected by polio. Today we are an organisation that supports people with impairments of all ages across the diverse cultures of Aotearoa. We have a role in working with communities to identify and remove the many barriers that prevent people from achieving their goals. We are a membership based organisation that is led by a National Board, with input from our local governance committees, staff groups and local communities, working together to support the work

that we undertake.

We build our work around three core documents:

- The United Nations Convention on the Rights of Persons with Disabilities.
- Te Tiriti o Waitangi.
- The New Zealand Disability Strategy.

We work within a disability rights framework and this is reflected in all our work. We partner with disabled people, their families and whānau, to enable them to have choice and control in their lives which are positive and connective. We also work with local communities, to challenge and assist them to become more inclusive. ▶



Our Foundation Statement:

Te Hunga Hauā Mauri mō Ngā Tāngata Kātoa

This statement forms the foundation of our identity and means that all people have Mauri, unique life force, and that we value every person equally.

Our National Kowhaiwhai:

Ka puāwai, kia tipu ake ai

Our kowhaiwhai, Ka puāwai, kia tipu ake ai, takes its inspiration from our vision Te Puāwaitanga. Translated this means: 'Let it blossom, and grow' and reflects our belief that by bringing together one's experiences and positive support from those around them, all people can blossom. When one blossoms, then one can grow.



▶ In our work, we connect with all parts of Aotearoa/New Zealand. We recognise Māori as Tangata Whenua, and are committed to being in relationships with Hapu and Iwi so that we continue to develop our ability to support Māori people with disabilities and their whānau.

CCS Disability Action consists of 17 incorporated societies, divided into six regions, providing a range of support services through 22 local and regional offices.

We provide disability support to over 5,000 people with disabilities and their families and whānau each year. We run the Mobility Parking scheme which supports over 115,000 people to more easily access their local towns and facilities. Our fully owned subsidiary, Lifetime Design Ltd, advocates for and provides universal design guidelines to improve the accessibility of New Zealand housing, which will benefit all people throughout their life. ▶

We measure success by our ability to connect people with opportunities that all kiwis might expect.

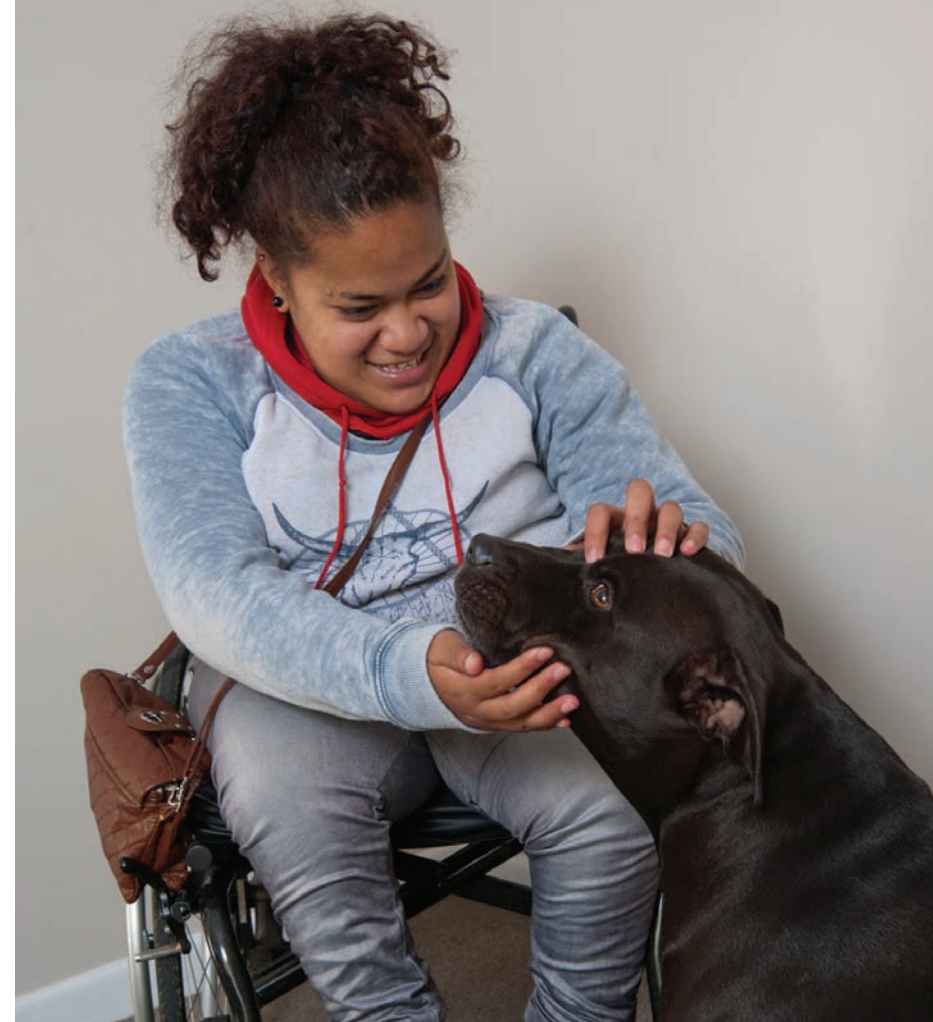




We are an organisation that supports people with impairments of all ages across the diverse cultures of Aotearoa.

◀ We measure success by our ability to connect people with disabilities with the range of life opportunities that every New Zealander might reasonably expect:

- Belonging in a family/whānau and community.
- Having friends and relationships.
- Having meaningful choices across all parts of life. This includes where to live, work and enjoy leisure activities. Also, where and how to be educated including life long learning.
- Greater choice and control in life.
- Participating in the community.
- Belonging culturally and spiritually in a way that has personal meaning.



Our Challenge

Te Whakatarara

ONE IN FOUR New Zealanders live with an impairment. Our society does not always operate in a way where everyone can participate. This lack of participation can be due to a physical barrier; a

barrier created by other people's attitudes and behaviours; or by a lack of access to information, resources and support. These barriers create an environment that can further disable people.



Our Vision: Including All People

CCS Disability Action has a vision that every disabled person will be included in the life of their family and community.

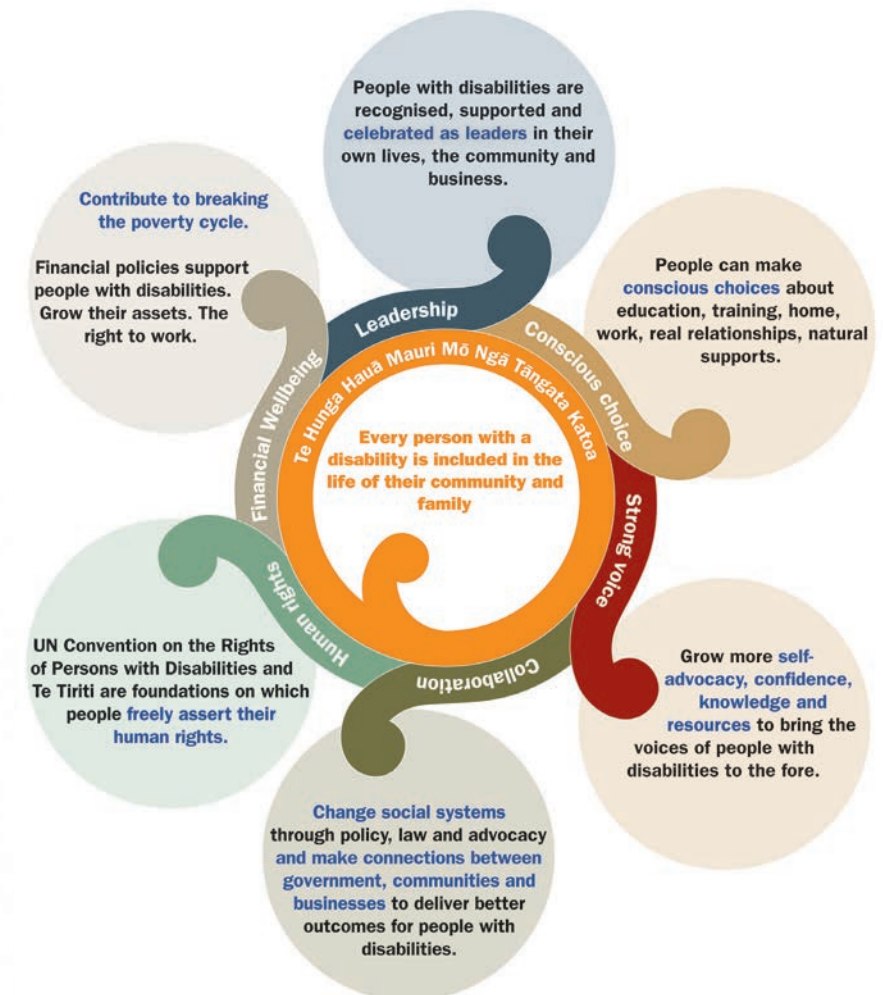
We are in action to make Aotearoa/New Zealand an inclusive society where everyone has an opportunity to play a meaningful part in

including all people. We therefore work with: family members, friends, Hapu, Iwi, educators, health, social services, business, employers, councils, Government, community agencies, community groups and the public.

“ We work in partnership with disabled people, families and whānau to have choice and control in their lives. ”

Te Puāwaitanga

CCS Disability Action has a vision that every disabled person will be included in the life of their family and community. Our Vision Te Puāwaitanga guides everything we do.





We value the mauri,
the unique life force
of each person.



Our Purpose

To strengthen communities and provide information, advocacy and support so people with disabilities are included in the life of their family and in their community.

We value:

- Mauri, the unique life-force of each person.
- People with disabilities' leadership.
- The connections of family, whānau and community.
- Our diversity and our differences.
- Personal and collective responsibility.
- The relationships and partnerships with those we work with and alongside.



We work to ensure
all children have the
best start in life.

Our Strategic Work Priorities 2014 – 2019

Aronga Matua ā-Rautaki

1 Children, families and whānau: Families and whānau have access to information, resources, support and advocacy at the right time, so that their children with disabilities get the best start in life.

2 Life transitions and milestones: People with disabilities and their families and whānau have access to information, resources and support to move through their key transition points such as going to school, moving into adulthood, finding employment, a home, a partner, becoming parents and retirement.

3 Living and connecting: People with disabilities have the right and the resources to live successfully in the home and community of their choice

and are free from social isolation, abuse or neglect.

4 Inclusive Communities: We work with communities to remove barriers to participation and contribute to the inclusive planning, thinking and development of communities.

5 Inclusive education: Children and adults can attend their local early childhood centre, school, and college, and move into further education with the supports they need to succeed.

6 Accessible environments: We take action and encourage people and organisations to think and act in ways that include all people, and advocate for public facilities, homes, workplaces and outdoor environments to be designed for everyone to use.

We support people to be in charge of their life, so they can live the life they want.



7 Leadership: We encourage and support people with disabilities to take on leadership roles, wherever possible, in their own lives and within their own community, including our own organisation.

8 Local responsiveness: We support the diverse populations and communities in which we work.



Building good relationships and getting to know disabled people and their families is at the centre of our approach.



We create individualised supports to meet people's needs and wants.

Our Organisational Work Priorities 2014 – 2019

Ou Matou Ritenga

- **National Consistency:** We implement common work processes and business systems to support our work in contributing to effective outcomes for people with disabilities.
- **A Rights Based Approach:** Our work is guided by our shared understanding of the United Nations Convention on the Rights of Disabled Persons and we deliver our work within a rights based framework.
- **Te Tiriti O Waitangi:** We guide our work with our acknowledgement of Māori as Tangata Whenua, our shared understanding of Te Tiriti O Waitangi and acknowledge that we cannot achieve Our Vision without recognising the partnership and the values that it signifies.
- **Partnerships:** We are open to, and seek, partnerships and coalitions with other values-aligned organisations and people.

“ We work in communities to identify and remove barriers so that all people can lead positive and connected lives. ”



Get in Touch

Whakapā Mai

If you believe you or your child may need some support, information or advocacy feel free to contact us directly.

☎ 0800 227 2255

@ Info@ccsDisabilityAction.org.nz

f www.Facebook.com/ccsDisabilityAction

t www.Twitter.com/ccsDisabilityA

➦ www.ccsDisabilityAction.org.nz



ccs
disability action

Including all people

TE HUNGA HAUĀ MAURI MŌ NGĀ TĀNGATA KĀTOA